

LET'S MAKE DIY POP CAN Planters

FOR REPOTTING SUCCULENTS!

WHAT YOU'LL NEED:



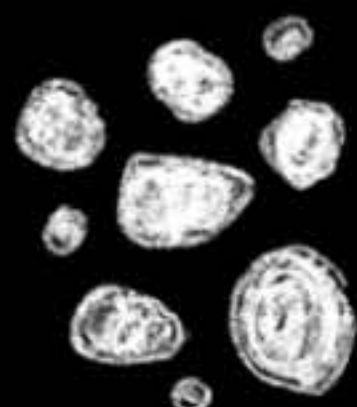
POP CAN OF
YOUR CHOOSING



KITCHEN
CAN OPENER



AWL OR OTHER
SHARP TOOL



STONES



POTTING SOIL



SUCCULENT

ART & TUTORIAL BY TEACHING ARTIST MIKAYLA WOBRAK.
FIND HER ON INSTAGRAM @MIK.CARTON!

PCCR is located at 214 N. Lexington St.
Pittsburgh, PA 15208

FIND US ONLINE AT WWW.PCCR.ORG/PROGRAMS

OR
@creative_reuse

facebook.com/creativereusepittsburgh

412-473-0100

STEP 1:



(TOP VIEW)

USE A REGULAR KITCHEN
CAN OPENER TO REMOVE THE
TOP OF THE CAN.

IT SHOULD
LEAVE A CLEAN,
SMOOTH EDGE ON
THE CAN. DISCARD
THE TOP CAREFULLY.
IT IS SHARP.

STEP 2:

USE AN AWL OR ANOTHER SHARP OBJECT
TO POKE HOLES IN THE CAN'S BOTTOM FOR
DRAINAGE, AS SUCH:

STEP 3:

THEN ADD STONES TO THE CAN
FOR DRAINAGE. SINCE THE
CAN IS TALL, YOU'LL WANT TO ADD ENOUGH
ROCKS THAT THE SUCCULENT WILL FIT.



(BOTTOM VIEW)

STEP 4:

REMOVE SUCCULENT
FROM ITS CONTAINER.
PLACE SUCCULENT IN
CAN, FILL IN WITH SOIL,
AND ENJOY YOUR
NEWLY RE-POTTED
SUCCULENT!!



IF YOU GIVE IT A
TRY, DON'T FORGET
TO TAG US!
@CREATIVE_REUSE



PITTSBURGH CENTER
for CREATIVE REUSE